

Welcome to the World of MultiFlex!

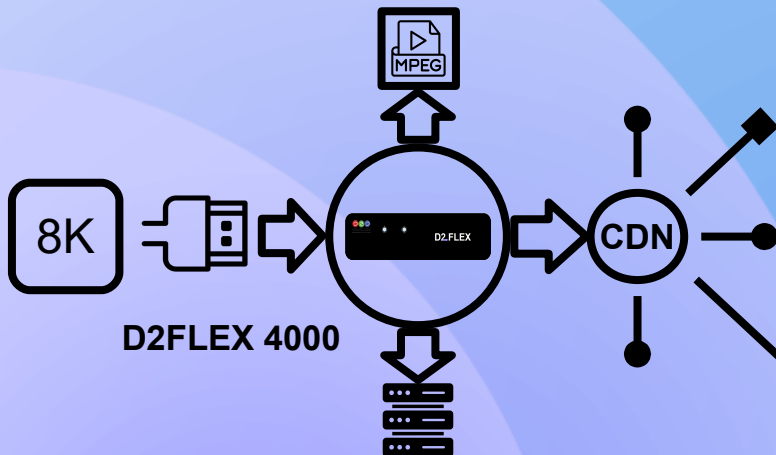
MultiFlex is a category of D2D products that encompass attributes from all D2D products.

Is it an Encoder?

Each D2Flex 4000 has an HDMI input and the power to stream 8K resolution streams. Have a sudden need to stream an HDMI source across the public Internet? No problem! Like all our products SRT, ZIXI, and RIST are built in.



Need to change the resolution for bandwidth purposes? Simply set the D2Flex 4000 to a lower resolution and stream. It's easy. Have an 8K multi-view you want to share with another location. This is the encoder for you.



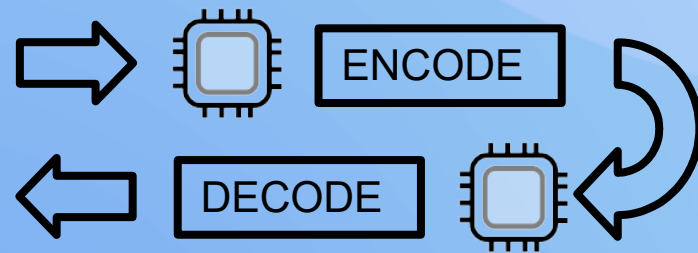
Your CDN needs RTSP? It does that too. True to it's name the D2Flex 4000 is a flexible encoder designed to deliver to drive, cloud, or CDN. The choice is yours.

Is it a Decoder?

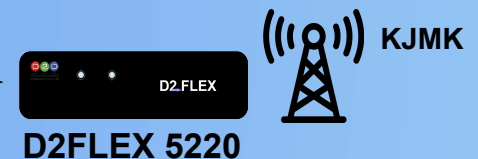
The D2Flex 4000 is a decoder too. Having to 2 HDMI outputs. Capable of (1) 8K out or (2) 4K outputs. Multi screen decoding for confidence is easy.



All decoding is handled by a separate processor. This means you can monitor post processor encodes in real time. You can establish Bi-Directional encode decode pairs across the public internet using SRT, ZIXI, and RIST. You can even play back from optional internal drive in a time delayed fashion.

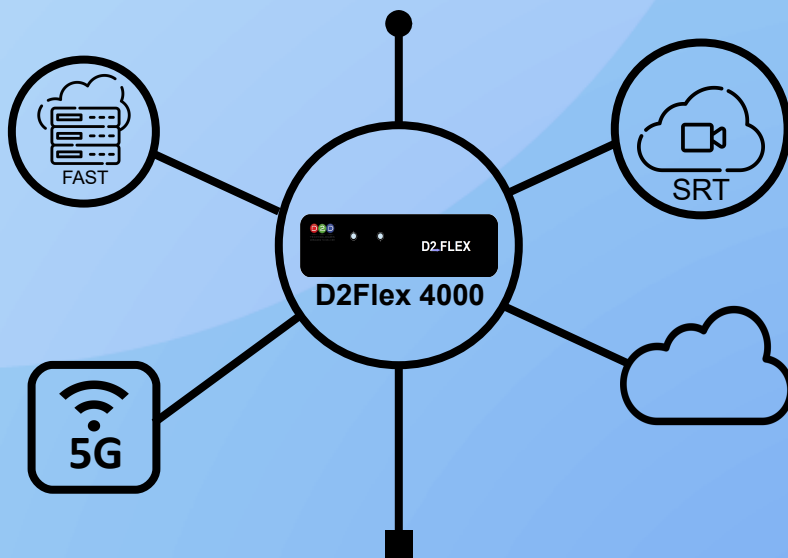


That's right! With features like time-delayed playback, reliable post-encode decode confidence monitoring, and the ability to decode fast streams as well as RTSP, this decoder alone would make it an invaluable tool for any broadcaster. Add the fact that it is also an encoder and it you can begin to see why we reference this family of products as MultiFlex.



But wait there's more...

Unbelievably the D2Flex 4000 is also a streaming Transcoder. With the ability to do live transcoding, you could convert your OTA stream for delivery to another location at a lower bandwidth cost to the network. You could just as easily do the reverse and lower your bandwidth cost for IPSTL links. These are the simple choices. The complexity is up to you.

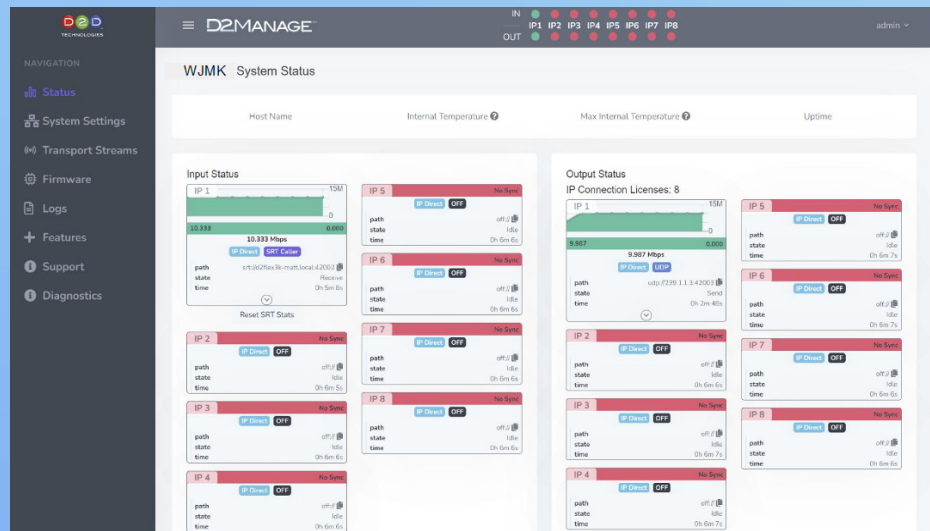


With a D2Flex 4000 distributed transcoding system unique streams could be added and shared across a global footprint at high compression and then transcoded at the last mile node to meet delivery requirements.



Easy set up with D2Manage

All D2Flex products come with built in browser interfaces. With D2Manage you can see the health of the stream and set your encode decode parameters. Once connected just save to your favorites and information is just a click away.



MULTIFLEX

D2D Technologies' MultiFlex family of products redefines versatility, with the D2Flex 4000 serving as an encoder, decoder, and streaming transcoder, offering features such as time-delayed playback and real-time monitoring. Supported by D2Manage's intuitive interface, D2D Technologies epitomizes reliability, adaptability, and innovation in the digital video landscape. The D2Flex 4000 truly is "Designed to Deliver".